

- Key**
- Address
 - Phone Number
 - Business Hours
 - Closed On
 - Entrance Fee
 - Directions

ACCESS

〈英語版〉



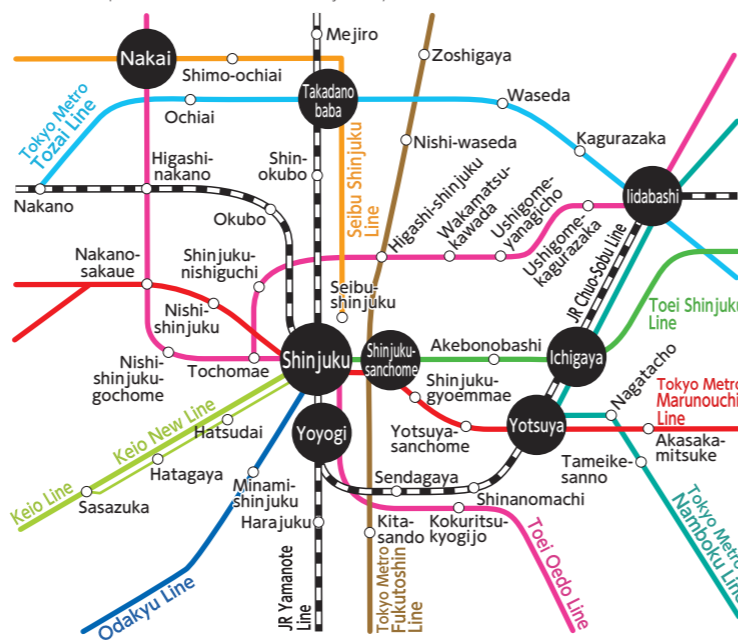
TAKADANOBABA・WASEDA
高田馬場・早稲田

Shinjuku tourist map

TAKADANOBABA 高田馬場 WASEDA 早稲田 OKUBO 大久保

Stations around Shinjuku

This map is focused around stations in Shinjuku City.



Offering Shinjuku Free Wi-Fi services.

~Shinjuku City Public wireless LAN service~



It can be used right away with a simple registration process where you enter information such as your email address. Please visit the official Shinjuku Convention & Visitors Bureau website for details on where it is available.



リンクする、新宿アート&カルチャー
新宿フィールドミュージアム



Shinjuku event/cultural facility information website ↑



温故知しん!じゅく散歩
新宿文化観光資源案内サイト

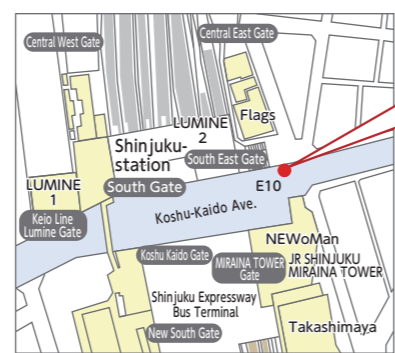


Shinjuku culture and tourism information website ↑

SHINJUKU TOURIST INFORMATION

Opening hours 10:00-19:00

※Closed for the year-end and New Year holidays



The data on these facilities is as of September 2024.

2024-21-2801

Inquiries
Shinjuku Convention&Visitors Bureau
〒160-0023 BIZ Shinjuku 3F,6-8-2 Nishi-Shinjuku, Shinjuku-ku
TEL:03-3344-3160 (in Japanese) FAX:03-3344-3190 (in Japanese)
info@kanko-shinjuku.jp (in Japanese)
http://www.kanko-shinjuku.jp



Edited and Published by

Shinjuku City・Shinjuku Convention&Visitors Bureau

Area Takadanobaba Yabusame

Yabusame is Japanese traditional horseback archery. An archer on the gallop dressed in feudal noble garb (suikan) runs through and fires three arrows against the targets in 200 meters. It is said that Yabusame was performed in a dedication to the Anahachiman-gu Shrine in 1728 as part of a prayer ceremony performed to cure shogun Tokugawa Yoshimune's successor. The practice continues to this day and Yabusame is held every year on Health and Sports Day at Toyama Park.



6 Kansen-en Park

No matter what season you visit in, Kansen-en is beautiful. It was originally the Shimizu family's strolling garden and villa, one of the three families of the Tokugawa dynasty. Kansen-en, meaning "sweet spring water" comes from the fact that the spring water in the garden was sweet and suitable for tea. Next to Kansen-en is Mizuinari-jinja shrine, where the stone monument for "Kansen" is located.



DATA

- 3-5 Nishi-waseda, Shinjuku-ku
- 7:00-19:00 (November - February; 7:00-17:00)
- 5 minutes on foot from Omokagebashi Tram Stop (Toden Arakawa Line), 10 minutes on foot from Waseda Station (Metro), 8 minutes on foot from Nishi-waseda Station (Metro)

7 Tsumami-Kanzashi Museum

8 Tokyo Somemonogatari Museum

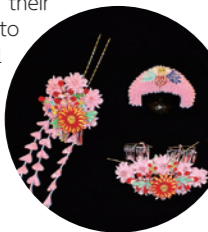
9 Kigumi Museum

Tsumami-kanzashi are decorative hair ornaments created out of small pieces of silk cloth. The dyeing works in Tokyo has incorporating a modern sensibility with stylish tradition. Kigumi is traditional craftsmanship used in Japanese architecture.



Tokyo Somemonogatari Museum

Traditional arts and their workshops are open to the public. Experiential learning is also available. (Inquiry required)



Tsumami-Kanzashi

Kigumi Museum

DATA

- Tsumami-Kanzashi Museum**
- Hills Ishida 401, 4-23-28 Takadanobaba, Shinjuku-ku
 - Free
 - 03-3361-3083
 - 10:00-17:00
 - Sundays, Mondays, Tuesdays, Thursdays, Fridays
 - 5 minutes on foot from Takadanobaba station (JR/Seibu/Metro lines)

Tokyo Somemonogatari Museum

- 3-6-14 Nishi-waseda, Shinjuku-ku
- Free
- 03-3987-0701
- 10:00-12:00, 13:00-16:00
- Saturdays, Sundays, Holidays
- 15 minutes on foot from Takadanobaba station (JR/Seibu/Metro lines), 2 minutes on foot from Omokagebashi Tram Stop (Toden Arakawa line), 10 minutes on foot from Nishi-waseda station (Metro), 12 minutes on foot from Waseda station (Metro)

Kigumi Museum

- Hall Eight 3F, 2-3-26 Nishi-waseda, Shinjuku-ku
- Free
- 03-3209-0430
- 10:00-16:00
- Sunday, Monday, Friday, Saturday
- 4 minutes on foot from Waseda Station (Metro), 6 minutes on foot from Omokagebashi Tram Stop (Toden Arakawa line), 10 minutes on foot from Nishi-waseda Station (Metro)

Area University Town

Waseda and Takadanobaba are university towns centered around Waseda University. The town and the university are very close, and they jointly issue a community currency and hold events. Many of the university's facilities are open to the public, such as the Tsubouchi Memorial Theatre Museum, which contains valuable domestic and international drama-related items.



DATA

- 1 Tsubouchi Memorial Theatre Museum**
 - 03-5286-1829(Theatre Museum Office)
 - Free
 - Call for details
 - 10:00-17:00 (When classes are in session. Tuesdays/Fridays: 10:00-19:00)
- 2 Aizu Museum**
 - 03-5286-3835
 - Free
 - 10:00-17:00 (Admission until 16:30)
 - Call for details
 - Inside Waseda University, 1-6-1 Nishi-Waseda, Shinjuku-ku
 - 5 minutes on foot from Waseda Station (Metro), 10 minutes on foot from Nishi-waseda Station (Metro)

3 Antiquarian Booksellers on Waseda Street

The area from Takadanobaba station to Waseda University, primarily around Waseda road, is one of Tokyo's prominent used book towns. Over 30 book stores are located here. Open-air Second-hand Book Fair is held on the campus of Waseda University every May.



DATA

- In the area between the Nishi-waseda intersection and the Babaguchi intersection
- Takadanobaba station (JR/Seibu/Metro lines), Waseda station (Metro)

4 Natsume Soseki Memorial Museum

This museum named after the famed writer was built on the property once occupied by Soseki Sanbo (Soseki Cottage). Soseki—who penned such masterpieces as Sanshiro, Sorekara and Kokoro—lived in this house from 1907 until his death nine years later. The museum has re-created parts of his cottage, such as his study, his salon and the veranda-style porch. There is also a book cafe and shop. In Soseki Park, located next to the museum, there is a bust of Soseki created by Naoki Tominaga, as well as a neko-zuka (cat memorial).



DATA

- 7 Waseda-minami-cho, Shinjuku-ku
- 03-3205-0209
- 10:00-18:00 (admission until 17:30)
- Permanent exhibit: ¥300 for adults, ¥100 for elementary and junior high school students
- Note: For groups of twenty persons or more, the admission is half-price.
- Mondays (or the following non-holiday if Monday falls on a holiday) and during the year-end New Year's holidays (December 29 through January 3)
- 10 minutes on foot from Waseda Sta. (Metro), 15 minutes on foot from Kagurazaka Sta. (Metro), 15 minutes on foot from Ushigome-yanagicho Sta. (Metro), 2 minutes on foot from the Ushigome Hoken Center bus stop on the Shiro (E) 61 Toei Bus

5 Yayoi Kusama Museum

Yayoi Kusama, an avant-garde artist known worldwide for her works with the motifs of polka dots and mesh netting, is an honorary Shinjuku resident. This museum displays her works, and includes a painting exhibit room, an experience-type installation and a reference reading space. The museum also conducts lectures and tours.



Photo : Tomoaki Makino ©YAYOI KUSAMA

DATA

- 107 Benten-cho, Shinjuku-ku
- Mondays, Tuesdays and Wednesdays (and while changing exhibits, etc.)
- 03-5273-1778
- 11:00-17:30 (admission by reservation only)
- Adults: ¥1,100, elementary, junior high and high school students: ¥600
- 7 minutes on foot from Waseda Sta. (Metro), 6 minutes on foot from Ushigome-yanagicho Sta. (Metro)

Area Colorful International Town



Okubo has become popular as one of Tokyo's international spots. Starting at Shin-okubo station and continuing Northwest along the larger roads are a large number of Pan-Asian restaurants, shops, and general stores. Korean stores are the most numerous, but Okubo's visitors include people from all parts of the world. Night and day, Okubo gives off a lively and international vibe.

Area The Town of the Teppogumi Hyakunin-tai



About 400 years ago, Tokugawa Ieyasu moved the seat of government to Edo, and in order to guard the Western reaches of the capitol deployed 100 musketeers there. The place they lived became known as Hyakunin-cho (100 person town). The shrine these musketeers prayed, Kaichu-inari-jinja shrine, name comes from these musketeers as well. Kaichu means "hitting all targets". Even now, the torii gate, wash basin, and garden lanterns they dedicated still remain.

Area A Town of Instruments



Before World War II, a large number of German musicians and Japanese classical musicians lived around Okubo. Thus, this area became famous as a "music town" and a "town of instruments". Even now there are many long-established music stores, used instrument stores, and studios, and international musicians are known to drop by when in Japan. In addition, many instrument repair shops and craftsmen, most notably for wind instruments, are active in the area.

